

Menominee Tribal Enterprises





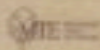
Ecologically Viable

Economically Feasible

Socially Desirable

MENOMINEE INDIAN RESERVATION OVER 140 YEARS OF SUSTAINABLE FOREST MANAGEMENT

"Maagtekuahkikhkiah Kew Kanahwihtahquag"
The Forest Keepers



- 1993 United Nations Recognition-Forest Management
- 1996 Presidential Award-Sustainable Development
- 1997 State Of Wisconsin Citation-Sustainable Forestry

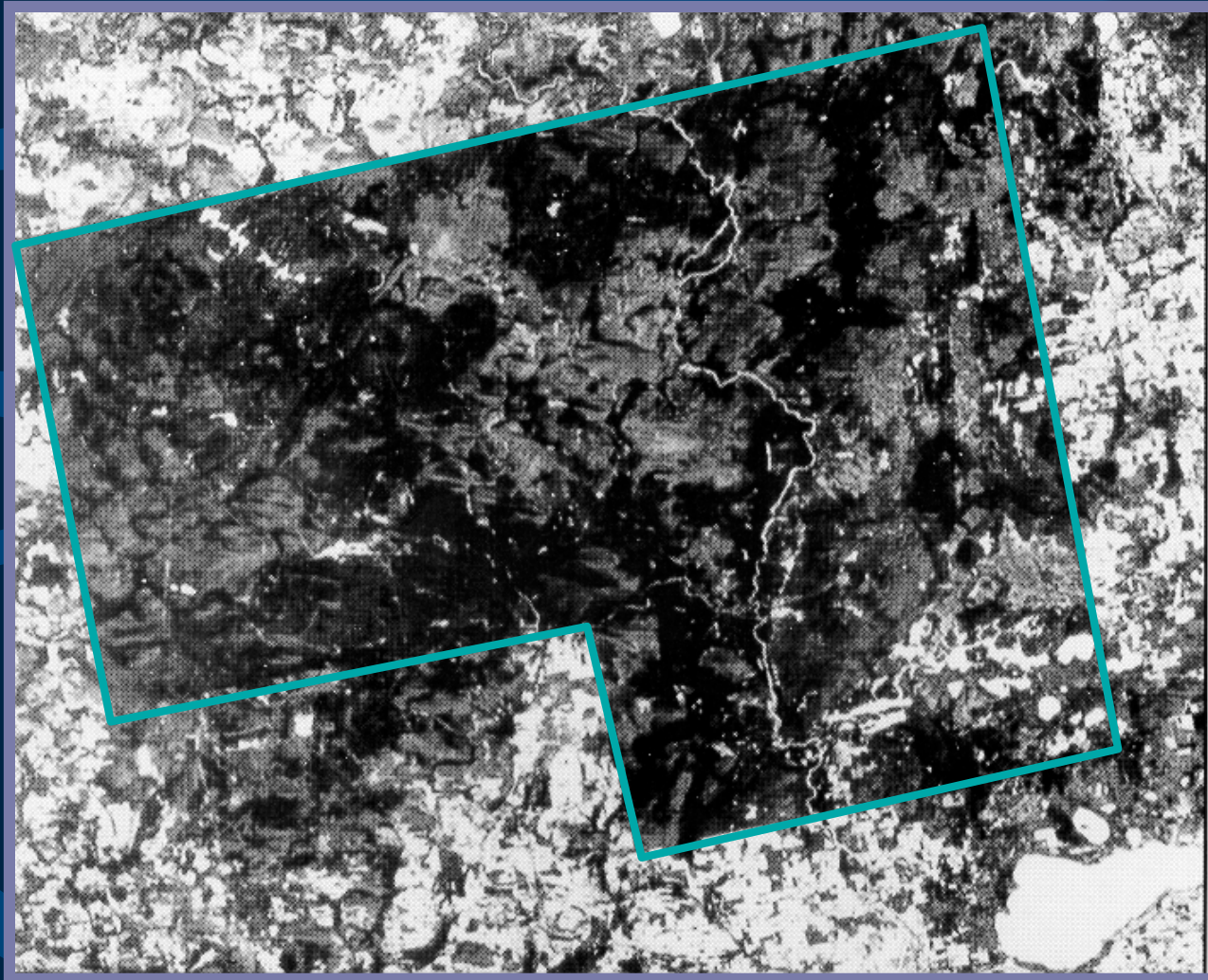


Managed By Menominee Tribal Enterprises











"It is said of the Menominee that the sacredness of the land is their very body, the values of the culture are their very soul, the water is their very blood.

It is obvious, then, that the forest and its living creatures can be viewed as food for their existence."

The background is a dark blue gradient with several lighter blue, wavy, horizontal bands that create a sense of movement and depth. The text is centered in the middle of the image.

“Land Ethic”







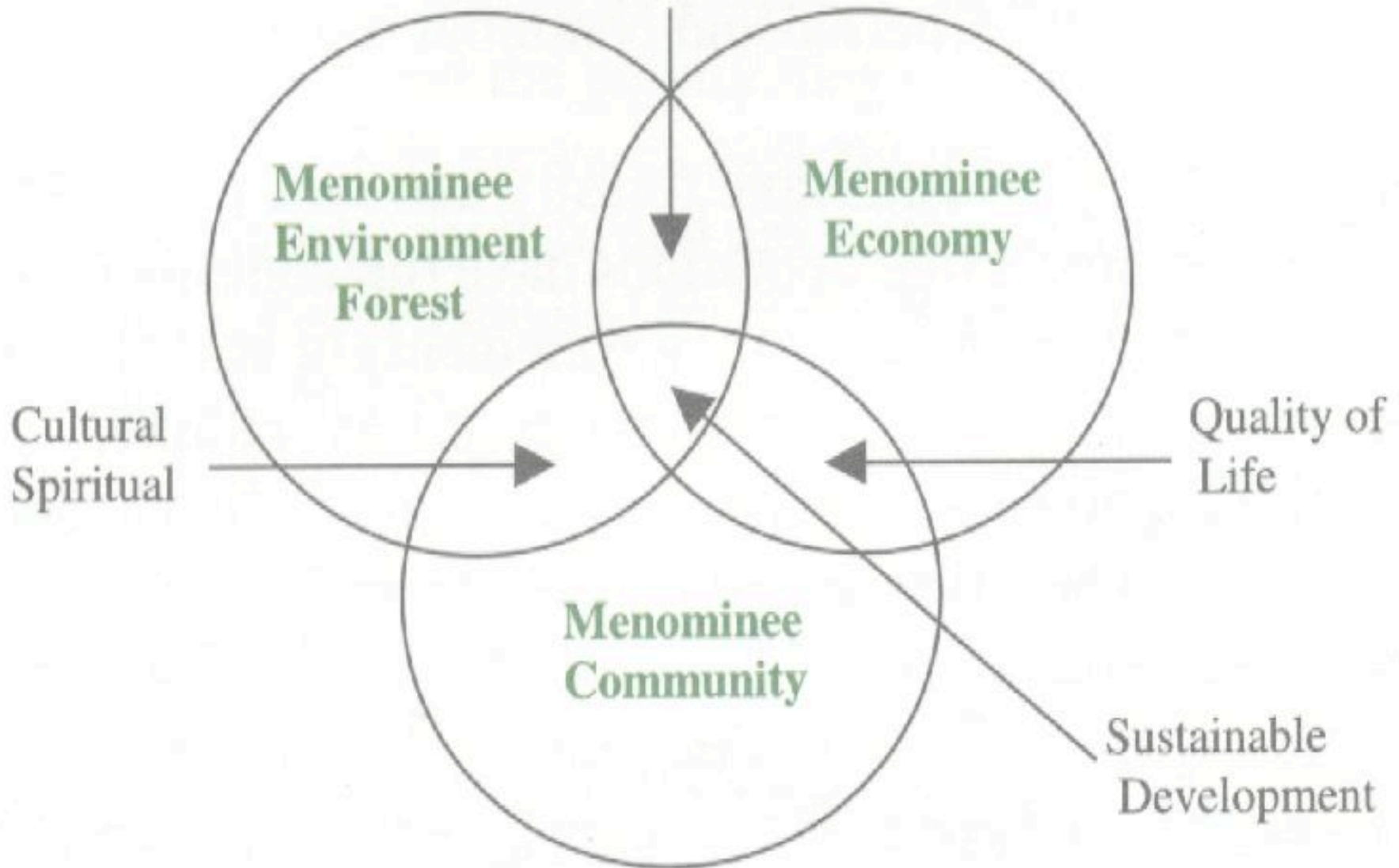


“Sustainable development of human culture means improving the quality of human life while living within the carrying capacity of supporting ecosystems.”

“Sustainability means thinking in terms of whole systems, with all their interconnections, consequences, and feedback loops.

This way of thinking avoids artificial and often misleading categories, such as humanity versus nature or jobs versus the environment.”

Production Certification
(Green Markets)



The background is a dark blue gradient with several lighter blue, wavy, horizontal bands that create a sense of movement and depth. The word "Environment" is centered in a white, italicized serif font.

Environment



Economy



Community





The basketball floor that will be used at the NCAA Final Four tournaments, similar to the one shown here from the 2002 men's tournament, has Wisconsin and Upper Michigan roots. File/The Associated Press



**MENOMINEE
TRIBAL
ENTERPRISES**

An aerial photograph of a vast, dense forest. The trees are a mix of various shades of green, creating a textured canopy. The forest extends to the horizon under a bright blue sky with scattered white clouds. The text 'The Forest Keepers' is overlaid in a white, elegant serif font, centered vertically and horizontally.

*The
Forest
Keepers*

*The “Leader” in Sustainable
Forest Products is:*

Celebrating

100 Years!



MTE

Menominee
Tribal Enterprises
P.O. Box 10
Neopit, WI 54150

Hardwoods
Softwoods
Kiln Drying
Surfacing

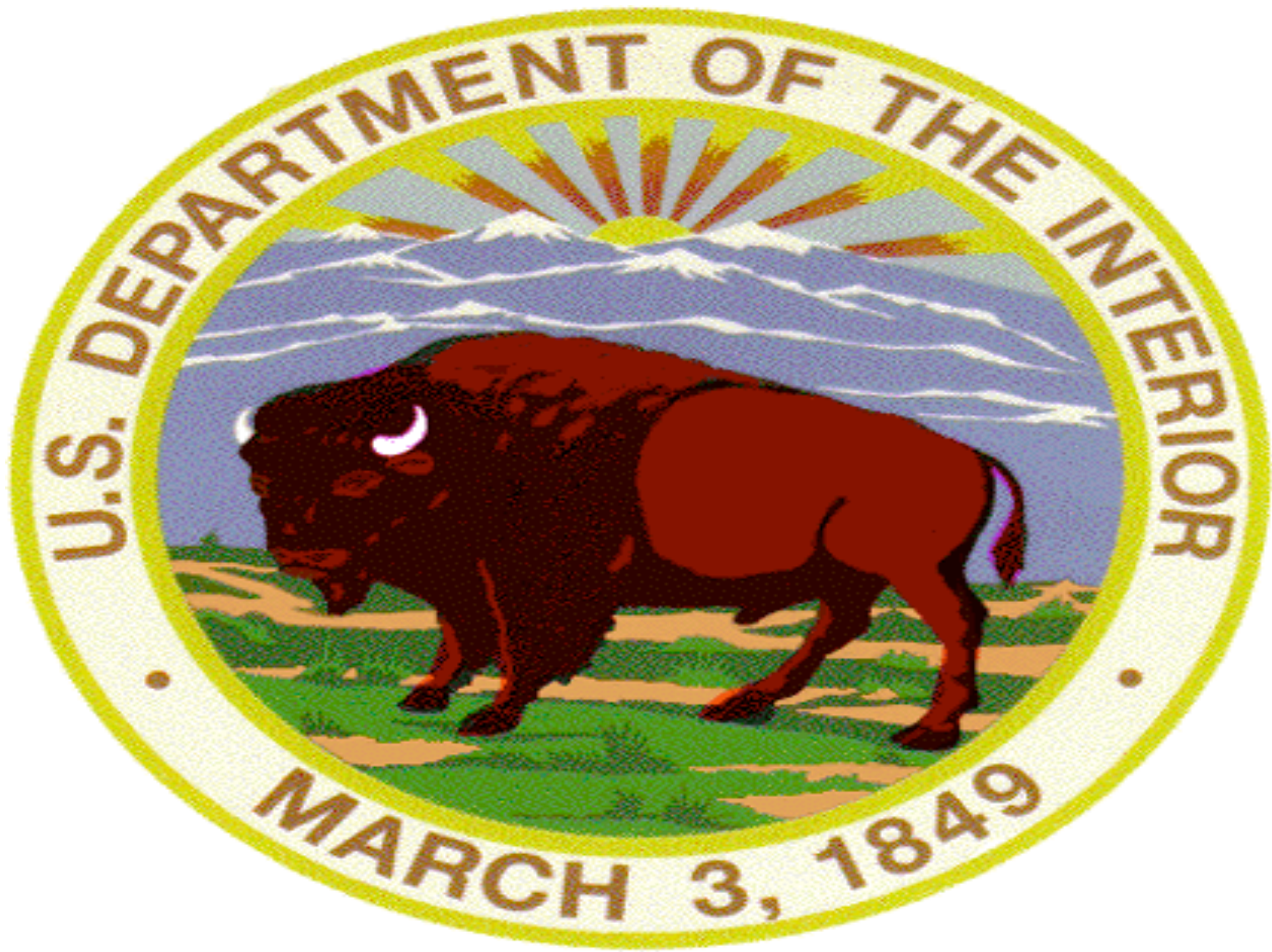
1908-2008
www.mtewood.com
(715)-756-2311







UGA900019



Resource Rich

AND

Capital Poor

The background is a dark blue gradient with several lighter blue, wavy, horizontal bands that create a sense of movement and depth. The text is centered in a light blue, serif font.

Self Determination

Determination by the people of a territorial unit of their own future political status



tornado swath

— White Lake

— Route 55

— Wolf River

Menominee Indian
Reservation

↑
N
1 km



The background is a dark blue gradient with several lighter blue, wavy, horizontal bands that create a sense of movement and depth. The text is centered in a light blue, serif font.

Socio-Economic

The background of the slide features a dark blue base color with several lighter blue, wavy, horizontal lines that create a sense of movement and depth. The lines vary in thickness and curvature, some appearing as broad, sweeping bands while others are more delicate. The overall effect is a modern, abstract design.

1.3 Billion Board
Feet

2.25 Billion Board
Feet

The background of the slide features a dark blue base color with several lighter blue, wavy, horizontal bands that create a sense of movement and depth. The text is centered in a light blue, serif font.

1.7 Billion Board
Feet

